



## Elizabeth Grove

Bushey

£145,000

Davidson Frost-Wellings are pleased to present this one bedroom first floor shared ownership flat moments from Bushey Heath High Street.

The flat is in excellent condition throughout with an open plan kitchen/reception space, a double bedroom and a family bathroom with built-in storage.

Elizabeth Grove is an exclusive, peaceful cul-de-sac within prestigious Heathbourne Village, moments from boutique shops, green spaces and top schools, offering refined, private and well-connected living.

40% shared ownership.

Monthly rent of £691.31.

Hertsmere council tax band C

Service charge £1,484 pa

Leasehold 246 years remaining.

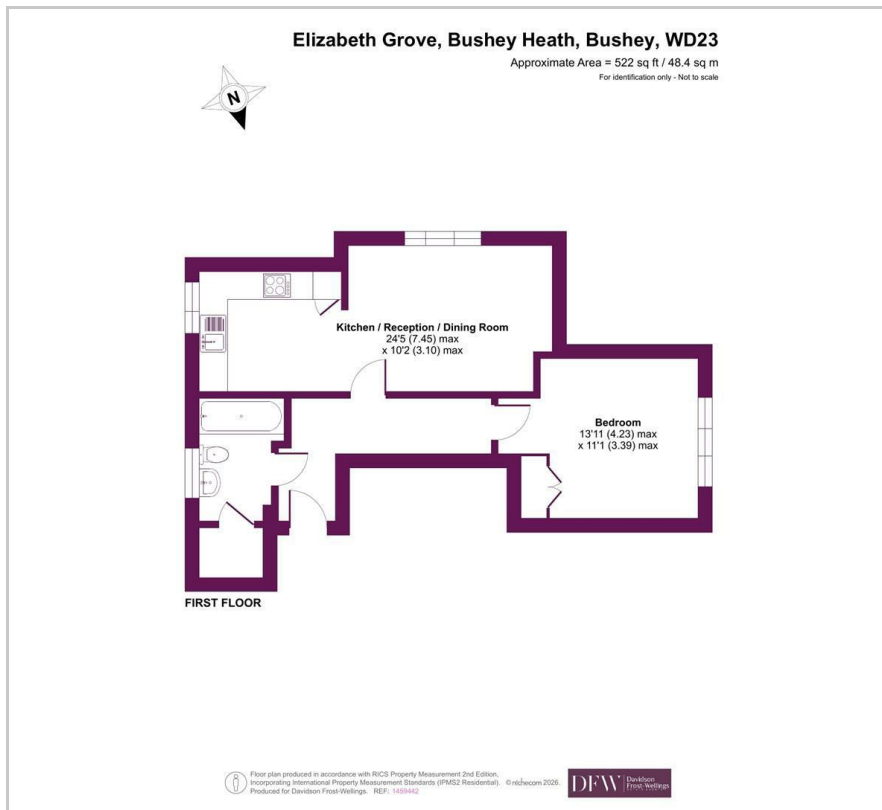
- One bedroom
- First floor
- Open plan kitchen
- Fantastic condition
- Allocated parking
- Exclusive development

### Viewing

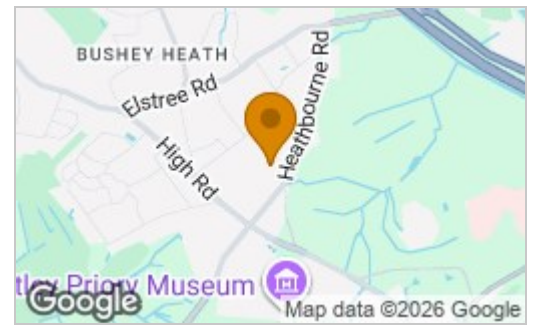
Please contact our Davidson Frost-Wellings Office on 020 8954 8806 if you wish to arrange a viewing appointment for this property or require further information.



# Floor Plan

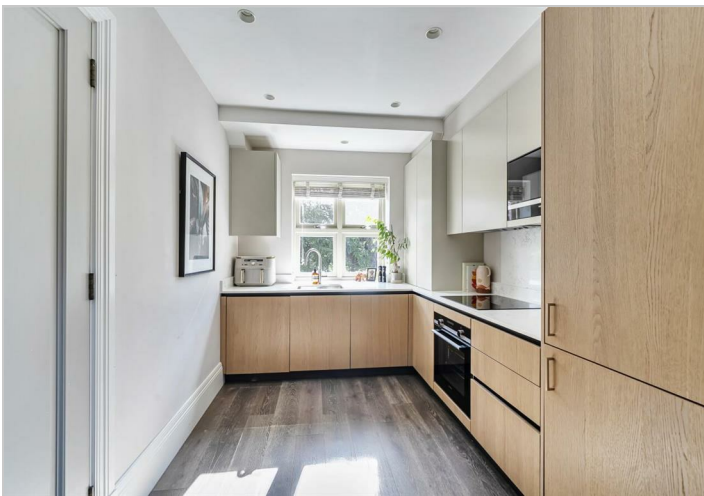
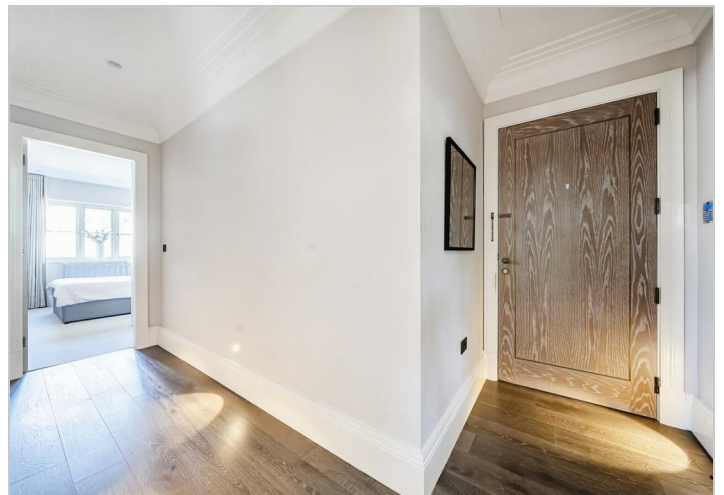


# Area Map



**Energy Efficiency Rating**

	Current	Potential
<i>Very energy efficient - lower running costs</i>		
(92 plus) <b>A</b>		
(81-91) <b>B</b>	<b>82</b>	<b>82</b>
(69-80) <b>C</b>		
(55-68) <b>D</b>		
(39-54) <b>E</b>		
(21-38) <b>F</b>		
(1-20) <b>G</b>		
<i>Not energy efficient - higher running costs</i>		
<b>England &amp; Wales</b>	EU Directive 2002/91/EC	



These particulars, whilst believed to be accurate are set out as a general outline only for guidance and do not constitute any part of an offer or contract. Intending purchasers should not rely on them as statements of representation of fact, but must satisfy themselves by inspection or otherwise as to their accuracy. No person in this firm's employment has the authority to make or give any representation or warranty in respect of the property.